

## 3D STYLUS

### Dot peen marking

#### DESCRIPTION

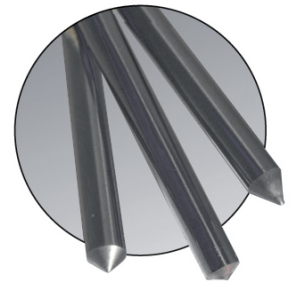
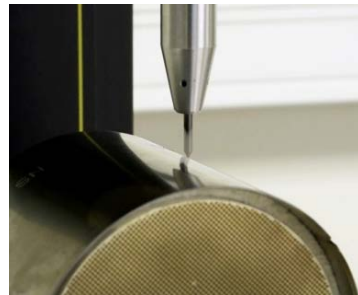
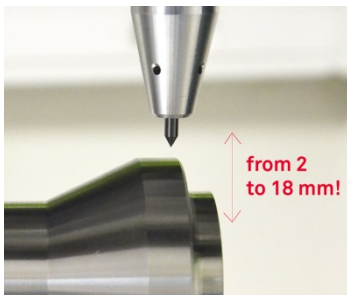
3D stylus is a very high amplitude stylus capable of following the relief of every part to be marked.

The stylus tip extends and retracts automatically as it follows the shape of the part.



Marking on inclined plane, distorted surface, uneven flatness

#### User benefits



##### High amplitude

- Absorbs part's important out-of- flatnesses
- Access to recesses, hollows, difficult-to-reach areas

##### Cost-effective

- Eliminate additional accessory cost (Z axis, DMC...)
- Simplifies on-line integration and saves installation times
- Reduced consumption (air pressure  $\leq$  3 bars)

##### Precision and quality

- Homogeneity and perfect alignment of points
- Simplifies Datamatrix™ code reading

##### Mark any surface

3 tip angles:

- 60°: deep marking and little Datamatrix™ codes
- 90°: versatile marking
- 120°: marking on raw or hard surfaces

TECHNICAL		3D STYLUS	
SPECIFICATIONS	Integrable machines	Stand alone machine	
Energy	Pneumatic		
Compressed air pressure	2 bars	3 bars	
Working distance	from 2 to 18mm		
Robustness	Reinforced bushings and carbide point		
Angle of tip available	60 – 90 – 120°		
Range compatibility	Available on new machines and on already installed machines		