

SOLUTIONS
for marking and traceability
in **HEAVY INDUSTRY**
and **MINING**



STEEL MANUFACTURING

MINING

METALLURGY

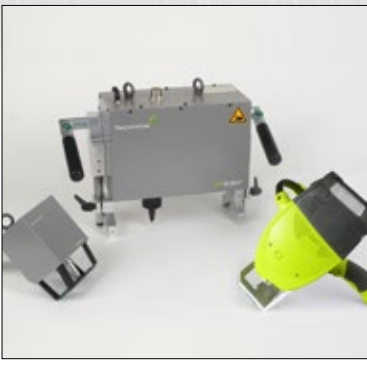
ENGINEERING

FOUNDRY

COMPONENTS



Marking and traceability of components in HEAVY INDUSTRY and MINING



Technifor developed a wide range of portable systems for a permanent identification of components in heavy industry and mining.

Technifor - Marking in difficult environments

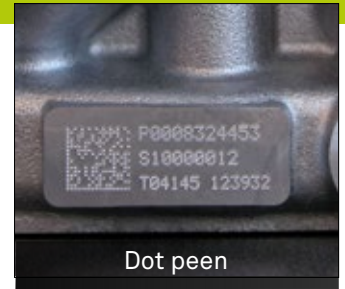
Permanent and unique deep marking

Marking of parts for internal identification.
 Marking of prefabricated components.
 Direct marking of large components even in difficult working environments.
 Engraving of various information: identification numbers, DataMatrix™ codes, serial numbers, date, text, technical characteristics, norms...

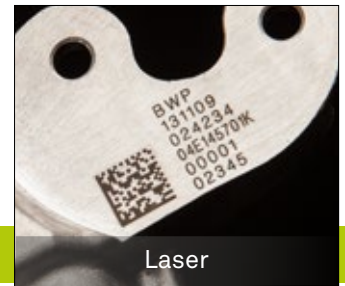
Readable, resistant and weatherproof markings

- Marking before surface treatment: the marking is readable after surface polishing, sandblasting, painting etc.
- Marking after surface treatment: marking of painted, anodised, etc. components.
- Marking of different materials: steel, aluminum, casts, plastics.
- Marking of different surfaces: smooth, raw, cast, machined, inaccessible.

Technifor - Markings that stand the test of time



Dot peen



Laser

We combine our experience with your production process

- Marking results of high quality
- Flexible solutions adapted to particular needs
- Communication with servers, databases, barcode scanners
- Robust and reliable marking in difficult environments



- Marking machine and software
- Reading systems
- Installation and training at customer site
- Technical support
- Full manufacturer's guarantee

+ **Customer advantages**

- Permanent marking of high quality
- Deep marking in difficult environments
- Easy installation and operation
- Machine mobility
- Forgery-proof identification



Deep marking solutions:
Column - Integrable - Portable



Direct part marking
Laser - Dot peen



Mobile marking for
large, heavy & hard-to-reach parts

About Technifor... Technifor is the world's first manufacturer of Direct Part Marking machines for automatic identification and permanent traceability of metallic and plastic parts.

About our services... Our technical teams (ISO9001 - v2008) install and maintain our micro-percussion, scribing and laser systems for OEM, system integrators and factory floor across all industries.



Scan me